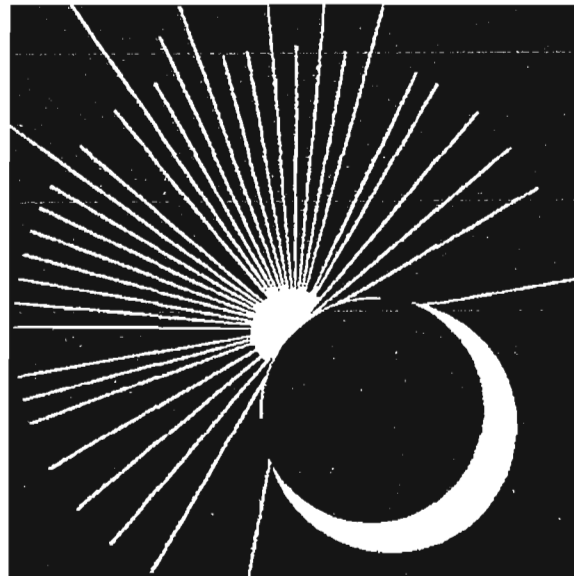


CHURCH OF THE ASSUMPTION

ASSUMPTION

2 0 0 0



A Commitment
Of Faith

REPORT UPDATE

Church of the Assumption

7711 Joseph Street

Mt. Healthy, Ohio 45231-3406

521-7274

September, 1995

Dear Parishioner:

Three and a half years ago there was a meeting in the Teachers' Lounge in Assumption School for the purpose of evaluating Assumption parish at that time and preparing for the future of our parish.

In the summer of that same year, 1992, the CASE Statement Report was published in a booklet "Assumption 2000 - a Commitment of Faith" and sent to all parishioners. The report listed the recommendations of the eight task forces formed for the self study.

Much has been accomplished in the last three years. Some results are visible and stand as a monument to the dedication, hard work and sacrifices of our parishioners. The new Parish Center is obviously one of these visible results as is the painting of the interior of the church and the new ceiling in the hot cafeteria.

There are many other fulfilled recommendations which are not as visible but nonetheless are accomplishments resulting from our self-study. Establishing a Youth Ministry, a baby-sitting service for Sunday Mass, parish census and putting census data on parish computer, reimbursing faculty member for extra-curricular service, upgrading the computer equipment in school, reorganizing the Finance Commission and the Parish Council.

This report is meant to bring our parishioners up to date on the realization of some our dreams. Not all have been realized, but we as a parish continue to work to deepen our "faith commitment" so that we may enter the third millennium filled with hope for the building of the Kingdom of God in Mt. Healthy and beyond.

Thank you for your dedication, cooperation and assistance. These accomplishments could not have been realized without you. May God be with you and yours and bless you now and always.

Sincerely,



Rev. Francis G. Lammeier

Pastor

YESTERDAY & TODAY

A Dynamic Mission and Vision

MISSION

Our role as a parish is to support, nurture, educate and provide a corporate atmosphere that encourages, stimulates, teaches, and celebrates the word of God. We recognize that all individuals have their own personal journey of faith and spiritual growth. We believe that through our individual Christian growth, our parish can better embrace its mission in our community and, as a result, become a beacon of God's Universal Love.

VISION

WHO ARE WE

Assumption Catholic Church is a parish of Roman Catholic believers under the Lordship of Jesus Christ. Here is where the word of God is preached and the Sacraments are duly administered to all who desire to receive them.

PURPOSE

We exist with the help of the Holy Spirit for the worship, for the edification of believers, and for redemption of people. We seek to enrich the lives of people in 3 ways: spiritually, educationally, and through Christian fellowship.

OUTREACH

Our outreach is two fold: the first is our local parish community where we live, and secondly throughout the world to seek and support the cause and word of God.

MINISTRY

Our parish is bound in a Sacred Covenant to shoulder the burden, share the risk, and celebrate the joys of all members. We try always to confront conflicts in the spirit of forgiveness and reconciliation.

PARISH LIFE COMMITTEE

Assumption Parish must be a vital, important and integral part of the lives of its parishioners. A concerted effort must be made to have effective programs which support the growth and address the needs of all parish members. The Eucharistic liturgy is central to the development of our spiritual lives. It is through this liturgy that the bonds of community worship are established.

From this origin, various parish ministries and organizations strengthen and enhance the spirit of community so vital to a full and meaningful Christian experience. Every effort must be made to continue to nourish the spiritual life of our parish.

The following are the major recommendations of the Parish Life Task Force and the status of each:

- 1). *Commitment must be made to increase funding for religious education at all levels. Funds would be allocated for books, materials, and courses outside the parish.*
This issue has not been addressed by the APLC to date. This will have to be a joint discussion between various areas including but not limited to the finance committee and the education committee.
- 2). *Establish a liturgical task force to coordinate and oversee all ministries in the areas of recruitment, training education and affirmation.*
This is essentially one of the roles the APLC has taken on overall. We have already begun to coordinate all the various ministries and the heads of those various areas to better facilitate communication and direction within the ministries. The first annual Ministries Sunday held October 16, 1994, did much to promote this process.
- 3). *Plan for an annual major spiritual and/or liturgical program or presentation.*
The shape and size of this program will be coordinated with Father Lammeier and Father Rob Jack.
- 4). *Establish a vibrant youth ministry, by recruiting a qualified person for the position.*
Preliminary work has begun and will continue over an extended period of time. Besides finding a qualified leader, ministry programs and content will have to be established.
- 5). *All religious education teachers need to continue working toward certification.*
This issue has not been addressed to date but will be discussed with Sister Marietta in the near future.
- 6). *Schedule an annual Commitment Sunday to inform parishioners about and interest them in our ministerial programs.*
Our first annual Ministries Sunday was a great success and has put down a strong foundation on which we may build. It is our intent to evaluate the results of this event so we may improve on it.
- 7). *Schedule a fellowship gathering once a month after Mass to foster and develop the spirit of community.*
This has been taken on by the Welcoming Committee and is going very well . . . monthly coffee and doughnuts.
- 8). *There is a definite need for improved and accessible meeting space for ministries and organizations.*
Parish Center Building will be used.
- 9). *Consider forming a "Network of Care" to assist parishioners in whatever ways needed through a coordinated effort.*
This issue has been discussed by APLC and is on our 5-year plan. Much time and effort will be needed to establish and determine the scope of this recommendation. Wilma McGlasson will lead this effort.
- 10). *Reinstate the parish picnic to help build community and cultivate interest, participation and commitment in all parish activities.*
Completed - Parish Picnic reestablished in 1994.
- 11). *The sacrament of Reconciliation should be celebrated more often for our school and CCD children.*
This has not been discussed at any length in the APLC. This will be discussed with Father and other appropriate parties in the near future.
- 12). *Resume a babysitting service at Mass, at the very least for special liturgies and celebration.*
Completed - Babysitting service is available.

Dear Fellow Parishioners,

The dust may be settled on our construction project, but now the **REAL WORK BEGINS!** The easy part of our Assumption 2000 Plan is over. The most important part begins with our continued commitment to our faith, to the future of our parish, and to the implementation of the blue print we all designed to make Assumption an active, alive and important part of our lives.

One of the major ways we can continue to grow and stretch our faith is through the creation of an effective Parish Council. It is their important task to guide us and to continue the dynamic dreaming in which we have been engaged. Dreams most certainly do come true, but it takes hard work, time, the talents of many and a focus to get the job done, as well. We have stretched ourselves and allowed our dreams to become a reality. Now, we have assembled an outstanding group to move Assumption even further along our path of faith. This year, the following folks are responsible for our continued progress. They are:

Parish Life:	Wilma McGlasson
Community Outreach:	Thelma Kaup
Building & Grounds:	Scott Garman
Finance Committee:	Fred Westermeyer
Athletics:	Rick Reder
Ministry 2000:	Nancy Preacher
Welcome Committee:	Sally Hader
Education Committee:	Tom Janszen
Communications:	Tim Kinne

Please welcome and support these individuals as they lead their committees. Talk to them, give them your input and keep them in your prayers as they strive to do their jobs and meet the challenges of our parish. The **REAL WORK BEGINS** and Assumption 2000 is more than just a dream, it is a reality because of you.



Rick Reder

Assumption 2000 CoChairman

Assumption Church in Mount Healthy Celebrates 140 Years with the Opening of a New Parish Center

On Saturday, May 6, 1995, Bishop Carl Moeddel and Father Francis Lammeier presided at a special mass at 5:30 p.m. dedicating the new Assumption Parish Center. Immediately following the Mass there was a reception in the new Parish Center and an opportunity to tour the new facility. After all Masses on Sunday, May 7, the new Parish Center was open and coffee and donuts were served.

The Cornerstone of a Plan that Started in 1991

The dedication of the new Parish Center is the cornerstone of a plan called Assumption 2000. In the winter of 1991, following extensive data gathering from every group and organization in Assumption Parish, eight task forces comprised of 126 members of the Assumption community initiated the Assumption 2000 planning activity. The task forces charge was to study, to review and to dream. The self-study program was completed in May, 1992. The task forces included: Parish Life, Demographics and Records, Finance, Community Outreach, Athletics, Education, and Building & Grounds. A total of 42 recommendations were made by the task force. 35 of the 42 recommendations have been implemented, the other 7 are in various stages of implementation.

The task forces on Parish Life, Community Outreach, Athletics, Education, and Building & Grounds all identified that a Parish Center was needed to improve the Parish. As a result a 3-year Capital Improvement Campaign was initiated in 1993. As a result of this campaign, the convent, which was under-utilized, was converted into a rectory for the priests, parish offices and meeting rooms for parish organizations. In addition, the former rectory was demolished to make room for the new Parish Center.

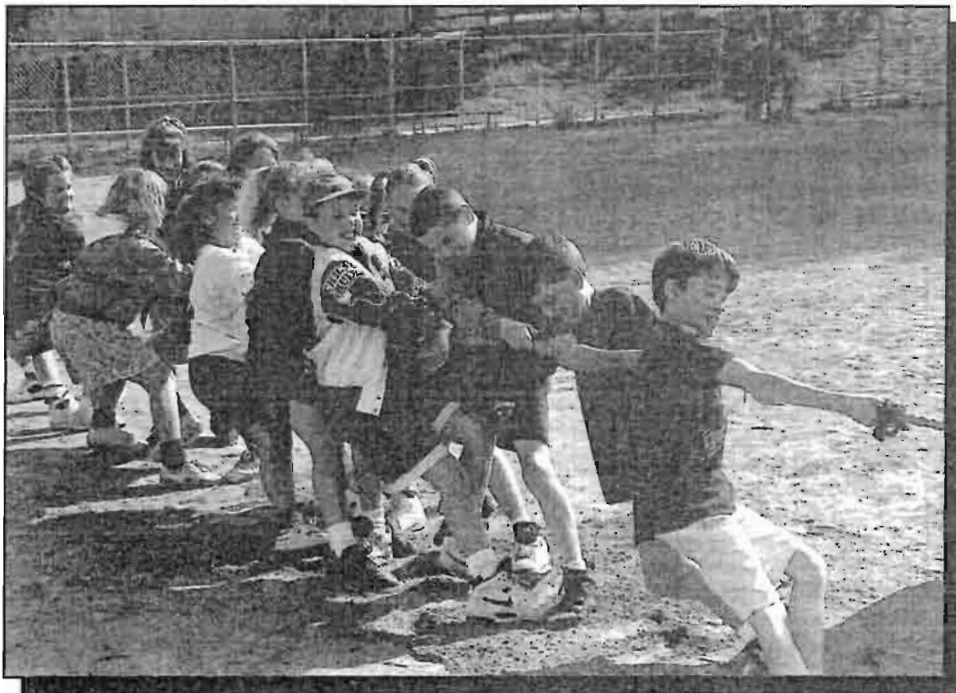


TASK FORCE ON ATHLETICS

Assumption Parish has a long-standing tradition of providing quality athletic programs for the youth of the parish. Athletic competition makes a positive contribution to our children's mental, physical and spiritual growth. It affords them the opportunity to work with others, test their leadership abilities and develop a strong work ethic. The strength of our athletic programs needs continual enhancement, and necessary improvements must be considered to provide all children with every opportunity to participate in an athletic program of exceptional quality.

The following are the major recommendations of the Athletics Task Force and the status of each:

1. *Strong consideration should be given to the construction of a multi-purpose building.*
The Parish Center has been completed.
2. *The current physical education program in the school needs to be evaluated and improved. This program would be enhanced by the availability of a gymnasium.*
The physical education program in the school has been evaluated. The program will be further enhanced by the completion of the parish center.
3. *There exists a need for more parental participation in school, athletic and parish activities.*
The Parish Council has formed a task force to make recommendations on how to increase parental participation in school, athletic and parish activities.
4. *Consideration needs to be given to expanding the athletic program to include activities for older youth and adults of the parish.*
Not addressed as yet.
5. *A long-term goal would have the parish own and operate athletic fields.*
Will be looked at in the future if needed.

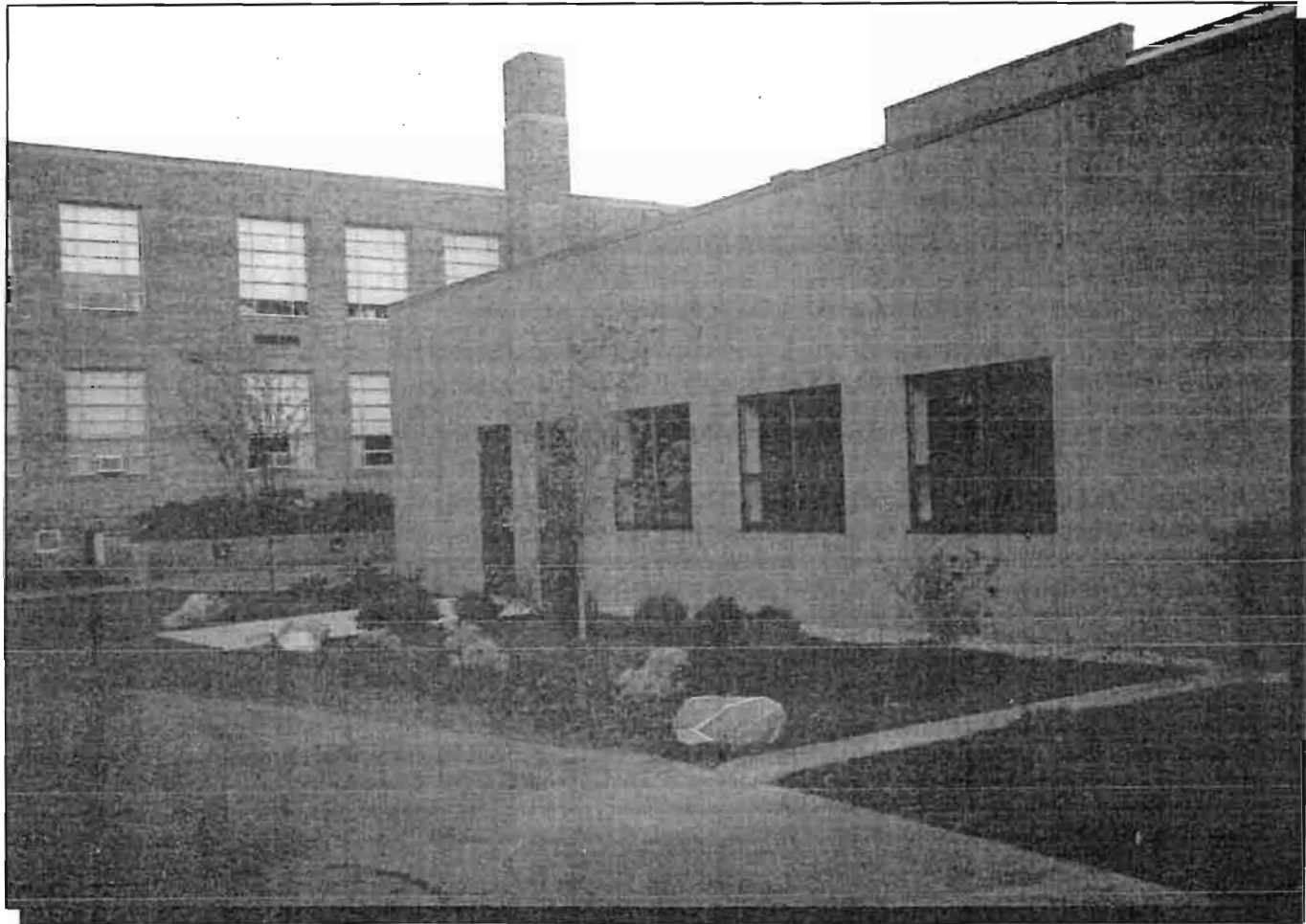


TASK FORCE ON EDUCATION

- 1. There is a critical need to upgrade religious and academic texts by purchasing new books.*
One classroom set of Bibles was purchased by the P.T.O. for the 5th, 6th, 7th and 8th grade classrooms.
95-96 Projected - Review Language Arts (English)
94-95 School Year - New Religion and Science textbooks purchased and in use grades K thru 8.
93-94 School Year - New Social Studies textbooks purchased and in use grades K thru 8.
92-93 School Year - New Math textbooks purchased and in use grades K thru 8.
91-92 School Year - New Math series in use grades K thru 8.
90-91 School Year - New Reading series in use grades K thru 8.
96-97 - The process of textbook/program revision/update begins another cycle beginning with Reading.
- 2. Establish a pay scale enabling the faculty to be reimbursed for performing extra-curricular services and duties.*
Student Council moderator is reimbursed at this time. There are no plans currently to begin reimbursing others for extra-curricular 'things'.
- 3. Continue our commitment to enhance computer education by purchasing new hardware and software, as required.*
3 Printers have been added to compliment the computers in the K-3 classrooms. A computer/printer is available for the library and eventually we will have a modem hookup.
Software is being purchased for all computers when requested. Presently we have 24 IBM/IBM compatible computers and 6 printers operational and in use in the computer lab.
- 4. Work diligently to increase teacher salaries to Level III on the Archdiocesan recommended pay scale.*
This has been discussed but no definitive action yet. The commitment of the Education Commission is to move toward this goal as soon as fiscally possible.
- 5. Hire a full-time physical education teacher, part-time art teacher and school nurse.*
We have a school nurse 4 days a week through auxiliary services funding. The 5th day a volunteer 'mom' nurse is available from 8:00 - 12:30. No plans to change this situation.
A full-time P.E. and part-time art teacher is not financially possible at this time.
- 6. Consider hiring a part-time business manager, who could develop ways to better utilize the school's budget.*
Completed - A business manager has been hired.
- 7. Enhance educational opportunities for our students by hiring a reading specialist, speech therapist, psychologist, learning disability and enrichment program teachers.*
Through Auxiliary Services Funding we presently have on staff the following:

 - Reading Specialist - 5 days/week
 - Speech/Hearing Pathologist - 2.5 days/week
 - Psychologist - 2 days/week
 - Chapter I (Federal Funds) - 1 HR/Day - 5 days/week
 - Learning Disability/Enrichment teachers - no action on this due to lack of parish funding.
- 8. Construction of a parish center with a gymnasium would provide the proper environment for a well-rounded physical education program.*
Parish community center completed.
- 9. Devise a tuition aid program for parish families needing such financial assistance.*
A tuition aid program is in place. This year approximately \$20,000. in tuition aid is being provided to Assumption Parish members. Application for assistance is made at the time of registration through Tuition Aid Data Service (T.A.D.S.). Richard Hahn, Business Manager, and Bill Walborn, Principal, review the information from T.A.D.S. and, with the approval of Fr. Lammeier, grant assistance to those requesting it based on availability of fund and T.A.D.S. recommendations. (Note - for the past several years the number of families requesting assistance and the amount of assistance requested has increased yearly. It is anticipated that this trend will continue for the 95-96 school year. Most tuition and grants are for a portion of the tuition. We ask that the parents try to pay something, this could be as little as \$50.00 or as much as several hundred dollars).





THE TASK FORCE ON DEMOGRAPHICS AND RECORDS

For Assumption Parish to make any important decisions, it is crucial that all pertinent facts are collected and organized.

The following are the major recommendations of the Demographics and Records Task Force and status of each:

1. *A parish-wide census needs to be taken immediately.*
The census of the parish is complete.
Also, the parish 'Welcome Committee' did a 'picture' directory.
2. *An effective group of volunteers must be recruited to conduct the census and complete the resulting data.*
We would like to thank all for volunteering to collect the data.
3. *Consideration must be given to the purchase of a new computer system and software to record, analyze and store the data.*
The computer system software was purchased. The census data that is stored on the computer can be sorted and has word search capability. The data is available to be queried for parish business by parish organizations. Contact Nancy Mohr in the parish office about the data base.
4. *Commitment must be made to update the census every 5 years.*
The parish office is keeping the data base current as changes are communicated to the office. The Parish Council is committed that a parish census will be taken every 5 years.

TASK FORCE ON FINANCE

Like most parishes today, Assumption faces many obstacles: increased costs; declining number of available clergy; no reserve funds or liquid assets; the ongoing task of maintaining a sufficient level of weekly contributions to meet expenses. Despite these concerns, Assumption has done a fine job in attempting to control costs.

The role of the pastor should be that of spiritual leader of the parish. We have found that Fr. Lammeier spends more than 50% of his time dealing with business and administrative matters.

It is more imperative now than ever before that Assumption evaluate its current operating structure and develop a long term financial plan.

The following are the major recommendations and status of the Financial Task Force:

1. *We must reduce the amount of time Fr. Lammeier devotes to business/administrative matters. This can be accomplished by hiring a part-time business manager/bookkeeper.*

Quick action was taken in 1992 to hire Richard Hahn as our part-time business manager. Richard has been instrumental in managing day-to-day parish business operations, initiating efforts to control operating expenses and formalizing business practices and financial records at Assumption.

2. *Evaluate the structure of the current finance committee. Reorganize this group to become a more active participant in financial issues of the parish.*

In August 1993, Parish Council chartered a Financial Task Force to recommend effective means to involve members of the Assumption Parish community in both the short and long term financial management of the parish, and to suggest strategies for the management of parish financial resources. This group has made the following accepted recommendations:

- Establish a standing advisory Finance Committee (3/94)
- Establish on-going program for communicating the current operating needs of the parish, our financial performance against goals and future needs.
- Setting annual individual and parish goals for Sunday collections.
- Instituting or re-energizing an endowment and memorial gift program. Provide information on this program to the parish.
- Establishing a volunteer coordination board to manage and maintain needed levels of assistance in parish endeavors.
- Appointing a Parish Center Event director to maximize revenue.
- Assist Business Manager to plan funds for preventive maintenance for our facilities.
- Use parishioner expertise, services and manpower to get jobs done whenever possible.

3. *Consider exploring new ways to increase parishioners' contributions to the weekly collections.*

The Finance Committee is working on improving communications with parishioners on financial matters. Two Sunday Bulletin inserts were issued concerning parish financial performance. The committee has reviewed and analyzed trends concerning weekly contributions and is developing a plan to help increase parishioner contributions.

The recommendation regarding maximizing memorial giving will be examined again later this year.

TASK FORCE ON COMMUNITY OUTREACH

Involvement, participation, cooperation and enthusiasm create a vibrant and exciting parish community. Assumption has a long tradition of providing each parishioner with opportunities to participate in a wide variety of activities and functions. Coordination, communication and increased involvement in such activities can only enhance the quality of Christian life in our parish community.

The following are the major recommendations of the Community Outreach Task Force and status of each:

1. *Meet the challenge of the youth in our parish by developing a strong, active, involved youth ministry. A. Hire a youth minister to coordinate all youth activities and programs.*
A Youth Ministry is formed. Meetings are being held.
2. *There is a perceived need for an over-all parish coordinator. This person would orchestrate all parish functions, i.e. communications, scheduling, participation.*
This recommendation has not been addressed to date.
3. *The needs of our senior citizens must be addressed. An organization for them should be established, with goals and programs developed.*
This recommendation has not been addressed to date.
4. *All parish activities need to be more widely publicized through the church bulletin and special event announcements.*
The Communications Committee is addressing this issue.
5. *There is a definite need for office, meeting and storage space for our organizations and ministries.*
The parish center is completed and the convent has been renovated as rectory and meeting rooms.
6. *Consideration should be given to renewing interest in and commitment to the Welcome Committee. This group can be a vital force for recruiting new parishioners to serve in our ministries and participate in our organizations.*
The Welcome Committee is established in the parish and very active.

TASK FORCE ON BUILDINGS AND GROUNDS

It is imperative that our parish have a church, school and parish buildings which are physically sound, safe and conducive to serving the needs of the parish. As Assumption faces the future, many areas are in need of improvement. The task force discussed the future maintenance and use of all church property. Its recommendations were made to renew the commitment to good stewardship of the physical plant. This commitment is necessary in order to provide our next generation good facilities for continued parish growth.

The task force identified three objectives:

- I. Correct critical problems.
- II. Develop a preventive maintenance plan.
- III. Erect a multi-purpose building.

There were over 33 specific recommendations made by this task force. The following are the major recommendations of the Buildings and Grounds Task Force and status of each:

1. *Establish a parish committee to oversee and facilitate maintenance and refurbishments.*

A parish committee is in place. A new 'hot' cafeteria ceiling has improved that area. The convent was converted to the rectory and meeting rooms.

2. *Develop an annual budget for maintenance in order to work preventively rather than on an "emergency repair" basis.*

Repairs are to be scheduled at the discretion of the committee, reporting to Fr. Lammeier or the parish business manager.

3. Begin the planning required to implement a 5-year plan for capital improvements, consisting of:

The planning required to implement a 5 year plan for capital improvements is complete.

- A. *Renovation of the convent to serve as a parish office and priests' residence, including construction of new garages.*

Completed convent to rectory conversion. There is a plan for construction of new garages.

- B. *Demolition of the present rectory, in order to avoid the considerable cost required to bring the building up to standards, and to provide a site for a new multi-purpose building which could be easily accessed from the school.*

Demolition completed. New parish center completed.

