





**PARISH COUNCIL  
TASK FORCE  
REPORT**



**APRIL 13, 1999**



## **TASK FORCE PROPOSAL AND HOW IT WAS ADDRESSED, ITEM BY ITEM:**

### **School children not attending Sunday Liturgies**

1. Examined percentage of our students actually going to church regularly
2. Identified sharp and drastic drop in school enrollment over last 5 years as a prime factor in why we see less and less children in Mass
  - a. Exit surveys sent to parents who have withdrawn children to examine satisfaction levels
  - b. Parents of current students polled to see if they are satisfied or can we expect continued decrease in enrollment?
  - c. Area parochial schools polled to see if similar problems exist that might warrant some cooperative programming and sharing of ideas
  - d. No PR program in place to promote the school
  - e. No identified center or point of excellence to draw children to this school
  - f. School district statistics examined to identify community issues that may be affecting Assumption
3. Looked at parents' role in getting their children to Mass
  - a. Do we need more adult religious education?
  - b. Is there a perception that the school religious ed. Program is not substantial enough
  - c. Do parents understand how important they are in passing the faith to their children by example and teaching?

### **Young adults not attending Sunday Liturgies**

1. Area parishes surveyed to find out what is working for them in the area of youth ministry. Cooperative effort probably will be recommended as a result.
2. Youth group mainly focused on athletic programming; efforts by adults to expand programming have not been successful to date.
3. Perception and reports that youth are attending Mass but often attend at area churches with friends from school.
4. This group is hard to reach. Recommend further study next year.

### **Young families not attending Sunday Liturgies**

1. All parents of school children surveyed and issues of Mass attendance and participation raised
2. Unable to do actual observer studies in church
3. October counts down over last 5 years; area parishes surveyed to find out if we are unique in this geographic area  
(As older members of our parish die, there is not a contingent of younger people and younger families replacing them)

### **Senior citizens not utilizing Parish Center**

1. Bingo has rather large contingent of senior citizens attending(Observation)
2. Parish organizations composed mainly of older parishioners are meeting in Providence room or rectory meeting rooms or Mil Supe's kitchen (Identified by survey of organizations)
3. Senior citizens who once were active as a social group called Mt. Healthy Senior Citizens dispersed to NCH Senior Center, Corpus Christi Senior Citizens, Kolping Society, and to Colerain Civic Center.(Identified by Sewing Group discussion)

Task Force, continued:

**Aging of many Parish Organizations with lack of new younger members to keep up with attrition**

1. All parish organizations and ministries polled, with exception of Bingo and Festival groups
2. Two parish organizations have ceased operations
3. One new parish organization has developed recently
4. Concern that lack of willingness to make a commitment and lack of time are causing decrease in membership and leadership
5. Leadership programming proposed in surveys
6. Absence of PR programs and communication within the parish: No one knows what is going on and/or who needs members or help. (Issue in many survey responses)
7. Two organizations did not respond to survey: Education Commission, PTO
8. One organization upset that Task Force addressed issues of their concern. Probable cause of lack of response by organization

## PRELIMINARY RECOMMENDATIONS FROM TASK FORCE:

Increase cooperation among area parishes and schools; Develop programming for this purpose

Improve data entry system in school now

Consider Parish newsletter or Pastor's column in bulletin to inform parishioners

Open closed organizations now; develop ministries

PR person in every organization with Parish Council PR person in charge of newsletter

Improve coordination of Parish Council Committees now

Improve Parish Council election system

Examine **very closely** ways to improve friendliness factor in church, school, parish organizations

Examine territorialism issues; institute program to increase camaraderie among organization leaders

Improve system welcoming new parishioners; no working system at present and pamphlets are outdated

Appoint parish council member to examine and address problems concerning each organization

Address floundering organizations now: Bereavement  
Sodality  
Youth Ministry  
?Boy Scouts

Get Education Commission on track

School issues:

- \*Point of Excellence not clear
- \*No active PR program; market physical plant, point(s) of excellence
- \*Teacher issues; feeling that raising concerns does no good and concerns are valid
- \*Friendliness needs to be improved: teachers, students
- \*Expand role of secretary PR?
- \*Decline in enrollment a very serious issue; study school system demographics more  
\*closely
- \*Consider extracurricular or auxiliary programming in the arts
- \*Look at Administrative issues raised repeatedly; have Education Commission review  
teacher evaluations before contract renewals
- \*Investigate Special education issues, testing, etc.
- \*Investigate serious issues raised in evaluations **NOW (appoint someone from  
parish council to investigate with administrative staff)**

Deal with youth ministry issue:

Make them feel welcome in ministries, etc.

Consider jobshare position with area parish or at least talk to area youth ministers

**CURRENT DATA  
ABOUT  
ASSUMPTION PARISH  
AND  
SCHOOL**

**OCTOBER COUNTS 1993 VS. 1998**

	<b>1993</b>	<b>1998</b>
<b>Assumption</b>	1846	1442
<b>St. Bart</b>	2077	1702
<b>St. James W.O.</b>	4201	4227
<b>St. I</b>	2585	3470
<b>St. V</b>	1450	1250
<b>Little Flower</b>	1890	1750

**Other Parishes polled chose not to answer this question**

	<b>4pm</b>	<b>5:30pm</b>	<b>8am</b>	<b>9:30am</b>	<b>11am</b>	<b>12:30pm</b>	<b>TOTALS</b>
<b>1993</b>	2187	1155	1088	2001	1834	1180	<b>9233/5=1846 PER WEEK</b>
<b>1994</b>	2173		1183	2209	2327		<b>7892/5=1578 PER WEEK</b>
<b>1995</b>	1798		1028	1687	1819		<b>6332/4=1583 PER WEEK</b>
<b>1996</b>	1820		846	1673	1707		<b>6046/4=1511 PER WEEK</b>
<b>1997</b>	1681		862	1541	1706		<b>5790/4=1447 PER WEEK</b>
<b>1998</b>	1801		797	1549	1621		<b>5768/4=1442 PER WEEK</b>

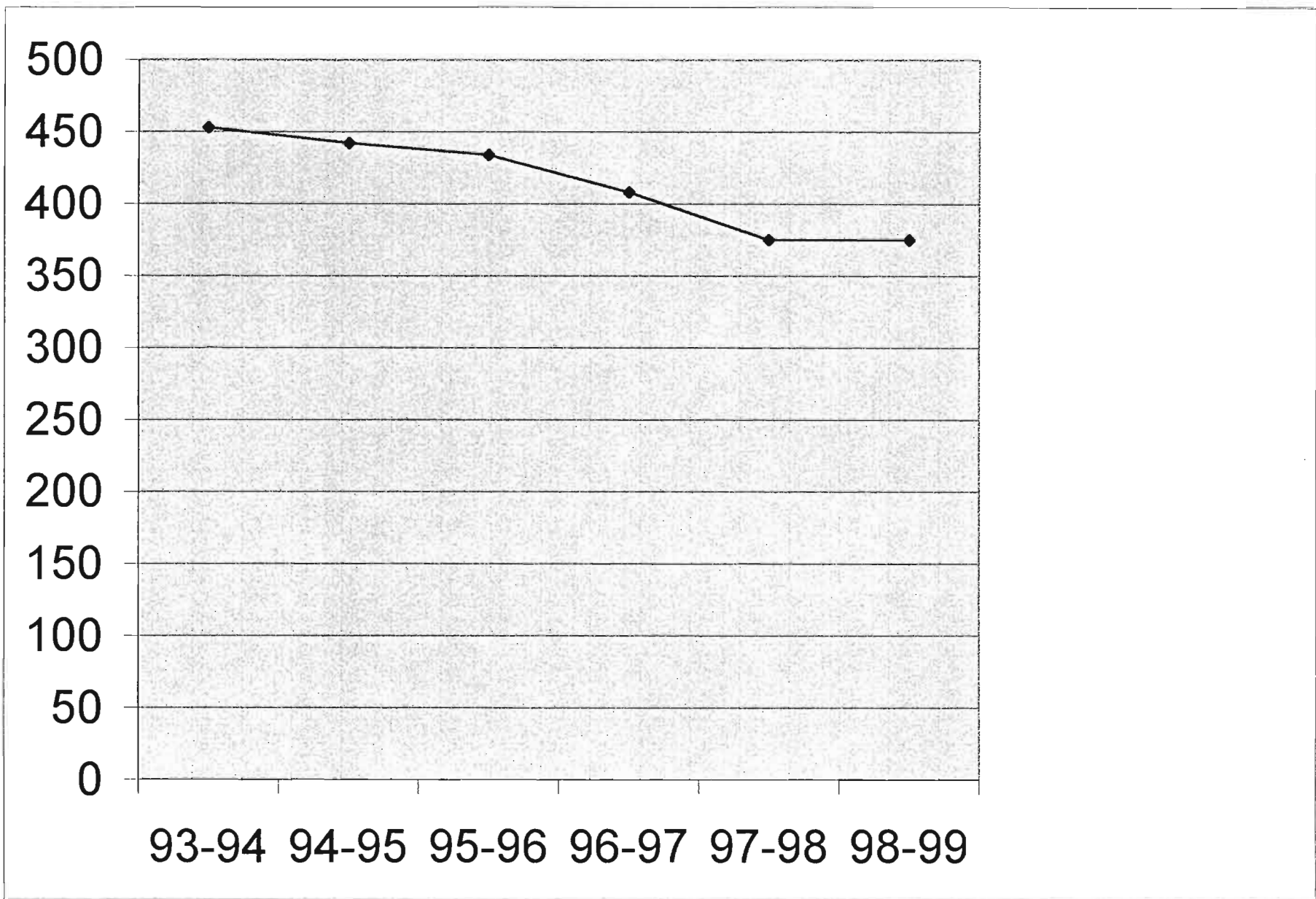
**OCTOBER COUNTS FOR ASSUMPTION PARISH**

**SCHOOL ENROLLMENT DATA  
ASSUMPTION SCHOOL**

<b>YEAR</b>	<b>93-94</b>	<b>94-95</b>	<b>95-96</b>	<b>96-97</b>	<b>97-98</b>	<b>98-99</b>
<b>K</b>	27	36	40	34	29	35
<b>1</b>	57	40	52	45	42	37
<b>2</b>	51	51	42	48	43	42
<b>3</b>	43	50	48	44	44	43
<b>4</b>	55	44	58	46	41	44
<b>5</b>	55	54	45	47	44	42
<b>6</b>	59	53	50	43	48	46
<b>7</b>	54	60	55	47	40	46
<b>8</b>	52	54	54	54	44	39
<b>TOTAL</b>	453	442	434	408	375	373

**THIS REPRESENTS NUMBERS AT BEGINNING OF SCHOOL YEARS EXCEPT FOR 1998-1999 FIGURES WHICH ARE ACCURATE TO FEBRUARY 1999.**





# 10-Year Enrollment Projection

	(Actual) 97-98	98-99*	99-00*	00-01*	01-02*	02-03*	03-04*	04-05*	05-06*	06-07*
PS	84	121	114	97	100	100	100	100	100	100
Kdg.	297	269	253	216	222	222	222	222	234	234
1st	374	315	279	263	224	231	231	231	231	231
2nd	336	371	314	278	262	223	230	230	230	230
3rd	320	322	354	300	265	250	213	219	219	219
4th	338	324	327	360	305	270	254	216	216	216
5th	296	326	310	313	344	291	258	243	243	243
6th	321	289	317	301	304	335	283	251	251	251
7th	324	332	298	327	311	313	345	292	292	292
8th	296	306	318	285	312	297	300	330	330	330
9th	417	393	401	416	373	410	390	393	393	393
10th	286	278	261	266	276	248	272	258	258	258
11th	187	172	171	160	163	170	152	167	167	167
12th	222	145	170	169	158	162	168	150	150	150
TOTAL	4098	3843	3773	3654	3521	3421	3317	3203	3214	3214

\* As estimated by enrollment study done by Planning Solutions LLC.

**Attendance: Average Daily Membership**  
(Totals represent the average number of students enrolled on a daily basis during the school year.)

K	284
1-6	1997
7-8	619
9-12	956
JVS	95

Total Daily Membership - 3951

Race: Caucasian	.43.5%
Minorities	.56.5%

## District Economic Status Index:

40.59% of students receive free lunches.

7.90% of students receive reduced lunches.

## Class of 1998 Post High School Plans

Further Education	130	62%
4-year program-87		
2-year program-43		
Employment Plans	71	34%
Armed Services	2	1%
Undecided or Other Plans	7	3%
<b>Totals</b>	<b>210</b>	<b>100%</b>

## 1997-1998 Statistical Data

### Certificated Staff:

Classroom Teachers	161.5
Special Education Teachers	39
Vocational	2
Educational Service Teachers	40.5
(Counselors-9, Librarians-3, Nurse-1, Art-8.5, Phys. Ed.-9, and Music-10)	
Other: (Serving Federal Programs)	10
Administrative/Supervisory	16
<b>Total</b>	<b>269</b>

### Race

Caucasian	235	Sex	Male	82
Minorities	34		Female	187

### Average Classroom Teaching (242 Teachers)

Experience:	15.7 years
Salary:	\$41,618

June 20, 2007  
729-2077

**SURVEY  
OF  
PARENTS  
OF  
STUDENTS  
OF  
ASSUMPTION SCHOOL**

## Parish Council Survey

Dear Parent:

In an effort to build a better school environment for our students, we are requesting your assistance! Below you will find several questions that we would like for you to think about and answer for us. This is followed by another page of quick "check the box" type of questions. These should only take a moment of your time and will help us to get a better picture of Assumption School from the parent's perspective. We know how much of a sacrifice you have made in electing to send your child to Assumption and we owe it to you to try to constantly improve our school as "our end of the deal". By taking a few moments to answer this survey, it will help us to meet that commitment, which will in turn help to make Assumption School a better place for your child.

**Please fill out this survey and then mail the form back in the self addressed stamped envelope enclosed. Alternately, you can send it into school with your child.** It can be delivered to the teacher who will forward it to the rectory so that your comments can be compiled with those of other parents. In this manner we'll hopefully be able to focus on the important items that are identified by a majority of parents. A report on the survey's findings will be forwarded to you once we have all the information and an action plan on what to do as a result of it! Thank you in advance for your cooperation in this matter. Your input will help us to make Assumption a better school for our children and those of the future! The survey is anonymous, but feel free to include your name if you wish! Assumption Parish Council thanks you!

### Part I--Written Questions:

1. What are the three things about Assumption School that you like best?

2. What do you like the least?

3. In what area does Assumption school excel?

Thanks for your input. Now all we ask is for you to check the answers that most fit the statements on the next two pages!

**Part II- Agree/Disagree Questions:**

Please Answer the Following:

	At Assumption School ....	Agree	Disagree
1	Teachers are dedicated		
2	Administration is sensitive to my needs		
3	Tuition relative to other schools is acceptable		
4	Educational quality is acceptable		
5	Religious education at Assumption meets our needs		
6	There are an abnormal amount of peer conflicts at Assumption		
7	Assumption School is a friendly place for students		
8	The student/teacher ratio seems adequate		
9	Supervision by teachers is good		
10	Teachers exercise the right level of discipline		
11	Teachers are willing to work with parents on problems		
12	If a special education option is needed (LD, ADD, gifted, etc.). Assumption is helpful in arranging testing and placement.		
13	Generally speaking, Assumption School meets our needs		

As Catholics, we are called to the full, active, and conscious participation in Sunday liturgy. It is apparent that not all of our students at Assumption are attending Mass on Sundays (week-ends) and that some of those who do attend do not participate actively in prayer of songs of the liturgies. Please check all that apply to you:

		Agree	Disagree
1	I attend Mass every Sunday (week-end) with my children		
2	If I cannot attend Mass on the week-end, I make sure that my children do attend		
3	When I attend Mass with my children, I encourage them by example to participate fully in the prayer and song		
4	I do not know enough about the Mass to know what it is that I am supposed to do.		
5	I can't sing very well but I always read the words of the songs when everyone else is singing		
6	My child(ren) know how important it is to participate fully in Sunday (weekend) Mass		
7	I haven't given any thought to how my participation or lack thereof affects my child(ren)		

As members of the Assumption Parish family we are called to support our parish and school activities so that the parish remains strong. Please answer the following statements by checking the appropriate box.

		Agree	Disagree
1	I volunteer my time in at least one parish ministry or organization activity each year		
2	I know what the Parish Organizations do		
3	I know who to call for information about joining an organization or ministry		
4	I feel welcome to join any parish organization		
5	I feel welcome in the church		
6	I feel welcome in the school when I drop in for information or other reasons		
7	I would like to help out but I don't know how		
8	I am too busy to volunteer my time		
9	Assumption Parish is a friendly place		

**Part III- Degree of Satisfaction Questions:**

Code: U = Unsatisfactory, F = Fair, S = Satisfactory, G = Good, E = Excellent

		Please check the one that most nearly applies				
	U	F	S	G	E	
1. Generally speaking, I would rate Assumption School as a _____ place to send my children.	( )	( )	( )	( )	( )	
2. I feel that the school policies and procedures are	( )	( )	( )	( )	( )	
3. Classrooms, restrooms, and physical facilities here are	( )	( )	( )	( )	( )	
4. As compared to other Catholic Schools, Assumption's tuition is	( )	( )	( )	( )	( )	
5. The level of concern for students here is	( )	( )	( )	( )	( )	
6. The Administration's willingness to make corrections and changes is	( )	( )	( )	( )	( )	
7. The extent to which I felt "tuned in" on what's happening throughout the school as a whole is	( )	( )	( )	( )	( )	
8. The extent to which I am informed ahead of time regarding changes in the school is	( )	( )	( )	( )	( )	
9. The <i>Principal's</i> availability to listen to my problems and help me when I have questions is	( )	( )	( )	( )	( )	
10. The <i>Teacher's</i> willingness to listen to my problems and help me when I have questions is	( )	( )	( )	( )	( )	
11. The level of cooperation among the <i>teachers</i> is	( )	( )	( )	( )	( )	
12. The level of cooperation among the <i>students</i> is	( )	( )	( )	( )	( )	
13. The religious education program is	( )	( )	( )	( )	( )	

Thanks for taking the time to fill out this survey. It will help us immensely in improving the school and your parish!!

## LIKE BEST

Catholic education  
Amount of info. communicated to parents  
School activities  
Family atmosphere  
Monthly newsletters  
Quality of academic education  
Quality of religious education  
Student/teacher ratios  
Discipline  
Children respected  
Children taught respect  
Feeling welcome  
Wonderful teaching staff  
Safe environment  
Friendly dedicated parents  
School staff  
Students polite and friendly  
Proximity to our home  
Overall friendliness and concern of teachers  
Safe environment  
Small classroom sizes  
PTO volunteers  
Student activities  
Dedication of the teachers  
Dedication of the parishioners  
Teachers care  
Discipline  
Safety issues  
Close knit group of people (school not too big)  
Good teachers  
Condition of the buildings  
Small school  
School always looks nice  
Striving to make improvements  
Mr. Reis is a great teacher and person  
Staff are friendly and cooperative  
Teachers  
Discipline  
Grading system  
Teachers  
Commitment to teaching Catholic faith  
Students are great to me and my family  
Class sizes  
Some very fine teachers  
Monthly newsletters  
Class sizes  
Activities for students  
Discipline procedures  
Dedicated teachers  
Parent involvement  
Discipline  
Dedication of staff and families to children  
Religious education  
Kindness of children to each other

## LIKE LEAST

tuition  
no tuition break for kindergartners  
no religious ed. in kdg.  
minimal attendance of kdg. at School Masses  
am vs. pm feeling in kdg.  
feeling of hopelessness among parents  
school colors  
lack of flexibility in curriculum development  
rules and regulations not being followed  
lack of reverence in church  
lack of religious ed.  
lack of friendliness of teachers  
teachers don't smile when you pass them in hall  
no over-riding sense of religious values  
cliques widespread and fostered in the school  
no sense of closeness among students  
Need to understand parents' position on homework  
All kids learn at different levels  
Lack of parent participation  
cold cafeteria needs help  
magazine sale  
classrooms need to be updated  
Careless use of cleaning chemicals around children  
need more supervision on playground  
the principal  
homework slips  
paying tuition  
lack of choice of uniforms  
religious ed. is lacking  
children rushed during lunch  
teachers inaccessible after 2:30pm  
attitude of teachers  
the principal's bias, lack of leadership, compassion  
tuition  
no recognition of band students  
no recognition of scouts  
they don't teach to the very bright  
Assumptions' teams not considered as nice or fair  
No differentiation of privileges: Junior high and el.  
Struggle to have child tested for ADD  
School board expenditures: wasteful spending  
Short notice on school board issues  
Third grader with 3 hours of homework  
Early evaluation for group placement w/ no retesting  
Limited Phys. Ed. program  
Negative attitudes of some teachers  
Cost  
Teachers attitude "only a job"  
No special tutoring available  
Large waste of food in cafeteria  
Large number of families not attending Mass  
Lack of support of gift certificate program  
Torn up religion books  
Students not challenged enough

## LIKE BEST

Catholic education  
Good prep for high school  
Very involved children and parents  
Teachers seem highly educated  
Religion being taught  
Time spent one-on-one with each child  
Teachers and their teaching ability  
Reading van  
Teachers  
Computer room  
People know one another  
Students help smaller students with studies  
Teachers really care  
Small school, small class sizes  
Catholic values in all teaching/activities  
Good education  
Opportunity to get involved in variety of activities  
Discipline  
Uniforms  
Religious education  
Size of school  
Overall religious education  
Dedicated, hard working teachers and staff  
Amount of material taught  
Encouragement of children to work hard  
Friendliness of staff, parents, students  
Location  
Availability of sports activities  
Helpful teachers and staff  
Teacher-student ratio  
Religious education  
Emphasis on religion  
Some of the teachers  
Discipline  
Good teachers that care  
Most of staff friendly and caring  
PTO makes kids a priority in decision making  
Friendliness  
Children feel welcome  
Sports  
Religion included in all aspects of school life  
Charitable works available and emphasized  
Parental involvement expected  
Computer lab  
Strong PTO  
Level of education  
Teachers  
Safe atmosphere  
Students taught to care about each other  
Small, unchanging student population  
Life-long friendships among families  
Family oriented  
Friendly atmosphere  
Parent involvement

## LIKE LEAST

Athletic association "click"  
Not happy with gym teacher  
Parental complaining instead of doing something  
Teachers do not go extra mile to help all children  
Not enough teacher-student communication  
Children with poor grades allowed to play sports  
Lack of enforcement of discipline rule  
Accepting discipline problems from other schools  
Nothing available for gifted children  
Principal does not deal with problems  
Music teacher threatens children  
Teachers' aides in kdg. unneeded expense  
Administration afraid to try something new  
Students not encouraged to question all things  
Committees a waste of time  
Lack of interest in learning disabled children  
Principal never follows through  
Not enough grammar/punctuation  
Teachers come to school 7:45 am and leave 2:35pm  
Priest not visible in school  
Dress codes not enforced  
Inappropriate behavior not acted upon quickly  
Inadequate discipline  
Teachers fearful of students/parents  
Lacking administrative support to teachers  
Students' idea that grades are not important  
No encouragement to compete or to excel  
Music teacher  
Some teachers should be doing something else  
Lack of racial diversity  
Student mentoring program not working  
Decline in enrollment  
Lack of diversity  
Not recognizing public schools as being good  
Tuition, tuition, tuition  
People not open to new ideas  
Parents always angry at teachers, principal, or priest  
I do not feel accepted after four years  
Many do not do their share to support school  
No mandatory volunteer rule  
Lack of interaction bet. Religious and students  
Weak discipline  
Grandparents week too long  
Too much wasted teaching time  
Money being wasted  
Lack of respect by students to adults  
Lack of parental involvement  
Lack of student participation in Mass  
Students' lack of respect in church  
Dress code not enforced  
Tattered/embarrassing religion books vs.  
new reading books (?message?)  
No paid youth minister  
Rudeness of teachers



## LIKE BEST

This is my child's last year  
Mrs. Braun gave my child a good start  
Tuition reasonable  
Quality of teaching staff  
Good atmosphere for learning  
Ability to see problems and solve them  
Parental involvement  
Teachers' interest  
Communication  
Safety  
Quality of education  
Good education  
Strong sense of community in parish and school  
I am always welcomed to get involved  
As a parent I can participate and observe  
Teachers supportive of child's welfare  
School Mass integrated into program  
Great activities available  
A safe place  
Great 5<sup>th</sup> grade teachers  
Overall cleanliness of school  
Starting each day and meal with prayer  
Requirement of service hours for graduation  
Size of classes  
Quality of teachers  
Friendliness of people in school  
Teachers  
High academic level  
Different programs offered  
Competent, caring teachers and staff  
It's Catholic  
It's close  
My son is getting a religious education  
More nurturing than a public school  
Small school; everyone knows each other  
Several extra activities available  
Families involved in school  
Close-knit community  
Dedicated teachers  
Good education  
Christian ethic  
Christian moral standards  
Some teachers  
Structure  
Standing by conduct rules  
Security  
Religious ed.  
Location  
Friendly atmosphere  
Location  
Church connected to school  
Active parish  
Quality of education  
Catholic foundation instilled

## LIKE LEAST

Lack of teaching to some students  
Lack of respect of teachers to some younger students  
Morning traffic jams  
Parking lot on Sunday  
Tuition; wish there were more fund raisers to help  
Some classrooms and bathrooms could be updated  
The principal: poor communication  
Teachers need computer help/training  
Kids need more playground choices/balls, etc.  
Why can't principal welcome students in the morning  
Continuing increase in tuition  
No improvements in curriculum year to year  
No enrichment programs  
Mr. Walborn just riding out time to retirement  
Conduct slips for petty stuff  
Teachers need to handle situations, not write slips  
Not all organizations work together  
A lot of adult only functions  
Not enough family or child functions  
Not enough volunteers  
Principal won't listen  
I really am not satisfied with parish or school  
Evaluate teachers more frequently  
Enrichment program for junior high eliminated  
Science fair eliminated... why?  
Mr. Walborn unable to deal with some problems  
Some teachers take strictness to higher level  
Discipline not black and white  
Need more communication from parish council  
Need more interaction between father and children  
Tuition rate hurts badly  
No playground with equipment  
Discipline given with lack of respect for student  
Children ridiculed by teacher  
Problem with non-student defacing property ignored  
Tuition  
No mandatory church contribution that is deductible  
Hard for new people to feel welcome  
Majority of parents don't even go to church  
Same people always doing everything  
My son taught there is no purgatory  
Principal and religious director afraid of controversy  
Low teacher salaries=increased attrition  
Too much homework  
Do teachers get evaluated?  
Principal a good guy but avoids confrontation  
Nothing gets done when there's a problem  
Parish center accessible only to org. sports/groups  
Too many "clicks"  
Very gossipy environment  
School admin. Needs to be more assertive  
Principal does not evaluate teachers yearly  
No yearly eval. of principal done  
No goals/obj. set for teachers and principal

## LIKE BEST

Dedication of faculty and staff  
Education and safety  
Small classrooms  
Lower teacher-student ratio  
Respect of students to adults  
Mark Couch and Dale  
Involvement in Masses  
Mostly good teachers  
Discipline in classrooms  
Division of A and B classes  
Parental involvement  
Staff  
Cleanliness  
Discipline  
Quality of teachers  
Caring teachers  
Activities are interesting and worthy  
Education level  
Discipline  
Catholic faith within the school  
Good reputation of school  
Integrity of teachers and support they show  
Only choice in the area  
Small school environment  
Extra academics  
Students attend Mass at least once a week  
Religious education  
Curriculum challenging  
Children learn to work together to attain goals  
Location  
Size of school  
Committees and groups  
Teachers care about students  
School keeps parents advised of happenings  
Learning is rewarded  
Convenience  
What it offers the kids  
Keeping parents informed  
Children feel they belong  
Discipline  
Religion  
Environment as a whole  
Most parents are nice  
Community spirit  
Small enough to know each other  
Teachers  
Community center  
Teaching staff  
Religious ed. and Sr. Marietta  
Great non-teaching staff  
Most teachers dedicated  
Location  
Mr. Reis  
Communication

## LIKE LEAST

Too many teachers/ admin. taking easy way out  
Not geared for advanced student  
Advanced students not challenged  
Principal not available in time of crisis  
Principal does not interact with students  
Not enough Catholic Doctrine  
Students don't know how to pray the rosary  
Music teacher has own set of rules/discipline  
Students' lack of participation at Mass

**LIKE BEST**

No-nonsense approach to teaching  
Family oriented  
Great teachers  
Great computer room  
Festival  
Majority of teachers are good  
Computer facilities  
Library has come a long way  
Catholic education  
Well-rounded education  
Good youth programs after school  
Warm atmosphere  
Caring teachers  
Mr. Simcoe, Ms. Braun, Mrs. Johnson  
Religious education  
Parents work as a team  
School and parish work together to organize activities  
Good cafeteria  
Great parish center  
Ms. Braun goes above and beyond  
All teachers interested in students  
School in great condition  
Mark and Dale friendly and helpful

**LIKE LEAST**

## POINTS OF EXCELLENCE ACCORDING TO PARENTS OF STUDENTS

Excels academically  
Polite student body  
Building the basics  
Academic level  
Longevity of teachers  
Education  
Discipline  
Computer lab  
Computer room, gym  
Dedicated teachers  
Keeps up with the times  
Teaching children the rules  
Family participation  
Discipline  
Quality of education is impressive  
Excellent staff  
Nice group of volunteers  
Math  
All areas: academics, sports, etc.  
Curriculum  
Communication  
It does not excel  
Teachers' enthusiasm  
Curriculum challenges students  
Computer lab  
Experienced teachers  
Concern about learning and keeping parents informed  
Unfortunately, there isn't anything  
Teaching the basics  
Academics  
Teachers  
Discipline  
Strong group effort of PTO  
Library, computer room  
Whatever it is, it is being kept a secret  
Closeness of parish families  
Teachers and volunteers

**32 out of 100 respondents did not know of any points of excellence or could not identify any.**

## AGREE/DISAGREE QUESTIONS ABOUT SCHOOL

	AGREE	DISAGREE
Teachers are dedicated	85	5
Administration sensitive to needs	68	21
Tuition acceptable, relative to other schools	84	9
Educational quality acceptable	80	13
Religious ed. meets needs	81	15
Abnormal amount of peer conflicts	25	63
Assumption school is friendly	89	5
Student/teacher ratio adequate	89	4
Supervision by teachers is good	76	14
Teachers exercise right level of discipline	74	18
Teachers willing to work with parents	85	6
Assumption helpful with special ed. arrangements	44	22
Assumption School meets our needs	90	4

**AGREE/DISAGREE QUESTIONS ABOUT ATTENDING SUNDAY MASS**

	<b>AGREE</b>	<b>DISAGREE</b>
Attend Mass every weekend with children	67	24
Make sure children attend Mass when I don't	40	40
I encourage participation by example	90	4
I don't know enough about the Mass	9	76
I can't sing but I read words instead	36	42
Children know importance of participating in Mass	80	11
I haven't given any thought to how my participation or lack thereof affects children	5	80

### AGREE/DISAGREE QUESTIONS ABOUT PARISH SUPPORT

	AGREE	DISAGREE
Volunteer in at least 1 organization or ministry activity	79	14
Know what Parish organizations do	75	17
Know whom to call for information	71	23
Feel welcome to join any organization	79	16
Feel welcome in church	86	7
Feel welcome in school	88	3
Would like to help but don't know how	6	77
Too busy to volunteer	10	75
Assumption Parish is a friendly place	88	9

## DEGREE OF SATISFACTION WITH ASSUMPTION SCHOOL

	UNSATISFACTORY	FAIR	SATISFACTORY	GOOD	EXCELLENT
Rate Assumption	0	1	12	56	28
Policies and Procedures	4	5	21	47	17
Physical plant	1	4	25	58	15
Tuition	2	17	31	42	5
Level of concern	0	10	21	46	24
Admin. willingness to change	13	22	22	33	8
Feel tuned in to what is happening	4	8	13	52	18
Informed ahead of time of change:	3	13	21	49	13
Principal's availability	8	22	21	35	13
Teachers' willingness to listen	4	11	11	47	31
Cooperation among teachers	5	11	24	42	23
Cooperation among students	3	8	28	50	13
Religious education program	3	10	21	49	18



**SURVEY  
OF PARENTS  
WHO WITHDREW THEIR  
CHILDREN FROM ASSUMPTION  
SCHOOL  
1993-1998**

**81 FAMILIES IDENTIFIED,  
50 SURVEYS MAILED**



**Part III- Degree of Satisfaction Questions:**

Code: U = Unsatisfactory, F = Fair, S = Satisfactory, G = Good, E = Excellent

Please check the  
one that most  
nearly applies

	U	F	S	G	E
1. Generally speaking, I would rate Assumption School _____ place to send my children. ( )	( )	( )	( )	( )	( )
2. I felt that the school policies and procedures were	( )	( )	( )	( )	( )
3. Classrooms, restrooms, and physical facilities were	( )	( )	( )	( )	( )
4. As compared to other Catholic Schools, Assumption's tuition was	( )	( )	( )	( )	( )
5. The level of concern for students was	( )	( )	( )	( )	( )
6. The Administration's willingness to make corrections and changes was	( )	( )	( )	( )	( )
7. The extent to which I felt "tuned in" on what was happening throughout the school as a whole was	( )	( )	( )	( )	( )
8. The extent to which I was informed ahead of time regarding changes in the school was	( )	( )	( )	( )	( )
9. The <i>Principal's</i> availability to listen to my problems and help me when I had questions was	( )	( )	( )	( )	( )
10. The <i>Teacher's</i> willingness to listen to my problems and help me when I had questions was	( )	( )	( )	( )	( )
11. The level of cooperation among the <i>teachers</i> was	( )	( )	( )	( )	( )
12. The level of cooperation among the <i>students</i> was	( )	( )	( )	( )	( )
13. The religious education program was	( )	( )	( )	( )	( )

## EXIT SURVEY

### REASONS FOR LEAVING ASSUMPTION SCHOOL

81 FAMILIES IDENTIFIED, 50 SURVEYS MAILED, 12 RETURNED

My child wasn't happy; I felt my child's self esteem was suffering

Our son was diagnosed with severe behavioral disability (later determined by professionals to be mis-diagnosed).

Inability of assumption faculty and staff to dispel unwarranted abuse and mental anguish placed on our son by many junior high students

As a family we invested in excess of 15 hours per week to help offset financial donation limitations and still had to pay at non-parishioner rate (member family for over 40 years)

Moved to Mason

We were fed up with Assumption School. We do miss the Parish and its members. Had bad experience with the school. Our bad experiences outweighed the good. We were afraid of repercussions from teachers on our child if we complained

If your child was creative and not sports oriented, forget it. No program to promote the arts.

Attitude of most parishioners; if you didn't grow up in Mt. Healthy you were always going to be an outsider and your ways or ideas were not going to be heard.

Some teachers there so long – needed new teachers and new ideas, new ways to make the curriculum fresh.

Know the principal and pastor were too tight and complaining wouldn't matter. Both very comfortable in their positions at Assumption.

We moved to the East side of town

I now home-school my children so they get the best Catholic education that I can provide. No government interference or mandates for funding that Catholic schools have lowered themselves to.

Teachers incapable of effective communication when it came to confrontations regarding students' behavior

We decided to move

Moved to new school district

Moved to Cleveland

Mt. Healthy area had become unsafe. We were afraid to let our children out of our eyesight.

**5 out of 12 respondents moved. 8 were unhappy with the school (1 moved because unhappy with Assumption)**

## EXIT SURVEYS

### TOP REASONS FOR MOVING

#### NUMBER OF RESPONSES

JOB TRANSFER	1	
CHANGE IN MARITAL STATUS	0	
BETTER EDUCATIONAL DISTRICT	4	
NEIGHBORHOOD ISSUES/PROBLEMS	3	
NOT SATISFIED WITH MT. HEALTHY AREA	2	
LACK OF RECREATIONAL ACTIVITIES	0	
WANTED TO PUT CHILDREN IN DIFFERENT SCHOOL	2	
COULD AFFORD BETTER HOME IF CHILDREN IN PUBLIC SCHOOL	0	
COULDN'T AFFORD TUITION	1	
I WOULD RE-ENROLL CHILD IF HAD OPPORTUNITY	3 YES	2 NO

**2 respondents did not move**

## EXIT SURVEY

### LIKED BEST

Religious education  
Uniforms  
Mr. Walborn is an excellent principal; he cares  
Many people who went to Assumption now send their children  
Religion was a part of the daily school life  
Prayer in school  
Excellent volunteer base in athletics  
Excellent volunteer base in scouting programs  
Caring attitude of the teachers  
Expectations for the children  
We were kept well informed  
Some of the teachers were very caring and good with students  
Tuition was kept at affordable price  
Size of classes  
Community: close to home  
Don't remember  
Academic standards  
Excellent teachers, religious education, and quality of education  
Close-knit community  
Mr. Walborn, the principal  
Teachers, esp. Mr. Reis and Mrs. Quattrone  
Plays available to students  
Music lessons available (band)

### LIKED LEAST

No art teacher  
The math books (like  
Saxon sys. better)  
Had to fight to get child tested for  
LD; went to private physician  
PTO in-fighting  
Some students who were athletic  
would make remarks about  
those who weren't  
Children need to be reminded about  
being kind and not hurtful  
Inexperienced, immature, unpro-  
fessional teachers  
The way religion is being taught  
Mr. Walborn's inept handling of  
our child's problem. Our  
child's reputation was ruined  
Felt if we complained it would be  
taken out on our children  
I had no problems  
Majority of junior high students  
exhibited extremely cruel  
behavior  
There are cliques that have too  
much control  
Wife & I felt like unwelcome  
outsiders

**PARENTS WHO HAVE TAKEN THEIR CHILD(REN) OUT OF ASSUMPTION SCHOOL 1993-1998**

81 FAMILIES IDENTIFIED, 50 SURVEYS MAILED, 12 RETURNED

**FEELINGS ABOUT ASSUMPTION SCHOOL**

	<b>AGREE</b>	<b>DISAGREE</b>
TEACHERS DEDICATED	8	1
ADMINISTRATION SENSITIVE TO MY NEEDS	4	6
TUITION ACCEPTABLE	8	1
EDUCATIONAL QUALITY ACCEPTABLE	10	0
RELIGIOUS EDUCATION MET NEEDS	9	1
ABNORMAL AMOUNT OF PEER CONFLICTS	5	4
ASSUMPTION FRIENDLY PLACE FOR STUDENTS	6	4
STUDENT/TEACHER RATIO ADEQUATE	7	1
SUPERVISION BY TEACHERS GOOD	5	3
TEACHERS EXERCISED RIGHT LEVEL OF DISCIPLINE	5	4
TEACHERS WILLING TO WORK WITH PARENTS ON PROBLEMS	5	3
ASSUMPTION HELPFUL WITH SPECIAL ED. ISSUES	3	1
ASSUMPTION MET OUR NEEDS, GENERALLY SPEAKING	4	5

**PARENTS WHO HAVE TAKEN THEIR CHILD(REN) OUT OF ASSUMPTION SCHOOL 1993-1998**  
 81 FAMILIES IDENTIFIED, 50 SURVEYS MAILED, 12 RETURNED

**DEGREE OF SATISFACTION WITH ASSUMPTION**

	<b>UNSATISFACTORY</b>	<b>FAIR</b>	<b>SATISFACTORY</b>	<b>GOOD</b>	<b>EXCELLENT</b>
RATE ASSUMPTION SCHOOL AS	1	1	3	4	1
FELT POLICIES AND PROCEDURES WERE	0	1	3	5	0
PHYSICAL PLANT WAS	0	2	3	6	0
ASSUMPTION'S TUITION WAS	1	0	2	6	1
LEVEL OF CONCERN FOR STUDENTS	2	0	4	3	1
ADMINISTRATION'S WILLINGNESS TO MAKE CHANGES	2	3	2	3	0
EXTENT TO WHICH I FELT "TUNED IN"	0	3	3	2	2
EXTENT TO WHICH I WAS INFORMED OF CHANGES AHEAD OF TIME	0	1	4	3	2



1

# ASSUMPTION SCHOOL SURVEY 1998

The Education Commission of Assumption Parish is sending out this survey again to get your feedback at the end of the year. Thank you in advance for taking the time to complete this survey. Please return to your child's homeroom teacher in the enclosed envelope.

SA=Strongly Agree A=Agree NO=No Opinion D=Disagree SD=Strongly Disagree

Tuition costs are being held as low as possible. SA A NO **D** SD

The policy that families paying in-parish tuition rates must contribute regularly to the offertory is known and clear. SA **A** NO D SD

Assumption School expenses are not excessive and money is spent wisely. SA A **NO** D SD

I would favor a system that requires parents to volunteer a certain amount of time in order to help keep tuition increases down. SA **A** NO D SD

I'm satisfied with the discipline in each of my children's classrooms.

Child 1. Grade \_\_\_\_\_ SA A NO D SD

Child 2. Grade \_\_\_\_\_ SA A NO D SD

Child 3. Grade ✓ SA **A** NO D SD

Child 4. Grade \_\_\_\_\_ SA A NO D SD

Communication with the principal is adequate and parental concerns are treated with respect by the principal. SA **A** NO D SD

I believe my suggestions regarding school policy will receive a fair and open-minded hearing by school administrators and the education commission. SA A **NO** D SD

Teachers treat students with respect. SA **A** NO D SD

Students receive enough individualized attention from teachers. SA A NO **D** SD

Students are adequately academically challenged. SA A NO **D** SD

The classroom environment seems well oriented to education. SA **A** NO D SD

My child is gaining age-appropriate knowledge regarding Jesus Christ and the Catholic faith. SA **A** NO D SD

My child is gaining age-appropriate insight into moral decision making. SA  A NO D SD

For the most part, my child feels accepted and respected at Assumption School. SA  A NO D SD

The area of my child(ren)'s education with which I am least satisfied is (circle one):

1. Tuition Costs 2. Academic Standards 3. Discipline 4. Christian Atmosphere  
5. Communication between school and home 6. Other \_\_\_\_\_

If I could change one thing about Assumption School, it would be \_\_\_\_\_

The one thing that I hope never changes about Assumption School is \_\_\_\_\_

Any other comments: \_\_\_\_\_

Thank you for taking the time to complete this questionnaire. With your help, we hope to keep improving Assumption School.

\_\_\_\_\_  
Name (optional)

Please check if you would like someone from the Education Commission to contact you about your concerns \_\_\_\_\_.

	A	B	ASSUMPTION SCHOOL SURVEY RESULTS (SUMMER 1998)																	
		Response #	1	2	3	4	5 K	5 1ST	5 2ND	5 3RD	5 4TH	5 5TH	5 6TH	5 7TH	5 8TH	6	7	8	9	
1																				
2																				
3																				
4																				
5																				
6																				
7																				
8																				
9																				
10																				
11																				
12																				
13																				
14																				
15																				
16																				
17																				
18																				
19																				
20																				
21																				
22																				
23																				
24																				
25																				
26																				
27																				
28																				
29																				
30																				
31																				
32																				
33																				
34																				
35																				
36																				
37																				
38																				
39																				
40																				
41																				
42																				
43																				
44																				
45																				
46																				
47																				
48																				
49																				
50																				
51																				
52																				
53																				
54																				
55																				
56																				
57																				
58																				
59																				
60																				
61																				
62																				
63																				
64																				
65																				
66																				
67																				
68																				
69																				
70																				
71																				
72																				
73																				
74																				
75																				
76																				
77																				
78																				
79																				
80																				
81																				
82																				
83																				
84																				
		AVERAGES	0.54	1.10	0.84	0.68	1.00	1.60	1.40	1.31	1.00	0.90	0.89	0.80	0.50	0.47	0.54	0.84	0.33	

79 SD = -2  
80 D = -1  
81 NO = 0  
82 A = 1  
83 SA = 2  
84



**SURVEY  
OF  
STUDENTS**

February 22, 1999

Dear Mr. Walborn and Sister Marietta:

I intend to distribute the Children's Mass surveys Monday morning before classes begin. I am sending along with the surveys a brief letter of instructions for the teachers. If you could make a brief announcement in the morning about the survey, it would be very much appreciated.

I received a copy of Linda Goldschmidt's letter sent to you. I believe she received inaccurate information and I am only sorry that she did not talk to me about her concerns last fall when she viewed the survey sent out last year. She must not be aware that the survey is completely anonymous. In any case, I have instructed the teachers involved not to take issue with her children's participation or lack thereof.

I will check with you Monday morning prior to distribution of the surveys to verify that you received this notice and are in agreement that the day and time are alright.

Thank you for your assistance with this project. I will share the results with you later in the week.

Sincerely,

Anne Ketzer

## **Teachers:**

### **About the survey.....**

**This survey is from Parish Council and is completely anonymous. Please emphasize to the students that they can be completely honest and they do not need to sign their names.** This survey has been approved by Parish Council and by Father Lammeier and is being passed to you with Mr. Walborn's and Sister Marietta's knowledge.

We are researching the observation that not very many of our school children attend Mass on the week-ends. An almost identical survey done last year showed that Mass attendance is somewhere around 50%. In order for us to examine this more closely, please help us by giving a few minutes of your morning to distributing and collecting these surveys. Place them immediately into the envelope provided and return to the school office this morning. I will share the results with Mr. Walborn and Sister Marietta when they become available. If the children in the primary grades have trouble reading this, please assist them by reading the questions for them.

Thank you so much for your time and assistance.

Sincerely,

Anne Ketzer  
Parish Council Task Force

P.S. There are two children who have been instructed by their parent not to participate in this survey. **The teachers involved have received notice from this parent.** I believe that she received inaccurate information about the survey but, in any case, please respect her wishes and try to avoid drawing too much attention to the children who have been placed in a difficult position. Again, thank you for your help.

## Children's Mass Survey

Please answer the following questions honestly. You do not need to put your name on the paper. This survey is for Parish Council. Thank you.

1. Are you Catholic? \_\_\_\_\_ YES  
\_\_\_\_\_ NO
2. Did you attend Mass or church this past week-end? \_\_\_\_\_ YES  
\_\_\_\_\_ NO
- If yes, at what church? \_\_\_\_\_ ASSUMPTION  
\_\_\_\_\_ OTHER; NAME:
3. Do you **usually** go to Mass or church on the weekends? \_\_\_\_\_ YES  
\_\_\_\_\_ NO
4. When you go to Mass or church, you go with \_\_\_\_\_ FAMILY  
\_\_\_\_\_ FRIENDS  
\_\_\_\_\_ GO BY MYSELF
5. Do you only go to church on the weekends if a parent drives you?  
\_\_\_\_\_ YES  
\_\_\_\_\_ NO
6. I am in \_\_\_\_\_ grade this year

**Thank you very much for answering this survey. Teachers, thank you for your help and time.**



### Children's Mass Survey

Please answer the following questions honestly. You do not need to put your name on the paper. This survey is for Parish Council. Thank you.

1. Are you Catholic?

YES

NO

2. Did you attend Mass or church this past week-end?

YES

NO

If yes, at what church?

ASSUMPTION

OTHER; NAME:

3. Do you **usually** go to Mass or church on the weekends?

YES

NO

4. When you go to Mass or church, you go with

FAMILY

FRIENDS

GO BY MYSELF

5. Do you only go to church on the weekends if a parent drives you?

YES

NO

6. I am in 3 grade this year

**Thank you very much for answering this survey. Teachers, thank you for your help and time.**

### Children's Mass Survey

Please answer the following questions honestly. You do not need to put your name on the paper. This survey is for Parish Council. Thank you.

1. Are you Catholic?  YES

NO

2. Did you attend Mass or church this past week-end?  YES

NO

If yes, at what church?

ASSUMPTION

OTHER; NAME:

3. Do you usually go to Mass or church on the weekends?  YES

NO

4. When you go to Mass or church, you go with

FAMILY

FRIENDS

GO BY MYSELF

*Sun time  
if we can  
TU*

5. Do you only go to church on the weekends if a parent drives you?

YES

NO

6. I am in 2nd grade this year

Thank you very much for answering this survey. Teachers, thank you for your help and time.

### Children's Mass Survey

Please answer the following questions honestly. You do not need to put your name on the paper. This survey is for Parish Council. Thank you.

1. Are you Catholic?

YES

NO

2. Did you attend Mass or church this past week-end?

YES

NO

If yes, at what church?

X

ASSUMPTION

OTHER; NAME:

3. Do you usually go to Mass or church on the weekends?

YES

NO But sometimes

4. When you go to Mass or church, you go with

FAMILY

FRIENDS

GO BY MYSELF

5. Do you only go to church on the weekends if a parent drives you?

YES

NO

6. I am in fourth grade this year

Thank you very much for answering this survey. Teachers, thank you for your help and time.

**CHILDREN'S MASS SURVEY RESULTS 1998 AND 1999**

**RESULTS BY GRADE**

**PERCENTAGE OF STUDENTS WHO ATTENDED MASS SUNDAY BEFORE SURVEY**

	<b>1998</b>	<b>1999</b>
KDG.	67	NOT CALCULATED
1ST GRADE	50	56.3
2ND GRADE	62.5	41.7
3RD GRADE	55.5	60
4TH GRADE	57.5	48.8
5TH GRADE	61	36.8
6TH GRADE	39.5	71.4 (Boy Scout Campout)
7TH GRADE	46	47.6
8TH GRADE	NA	
	N=314	N=304

**CHILDREN'S MASS SURVEY**

**ANSWERS IN PERCENTAGES**

	<b>1998</b>	<b>1999</b>
<b>Usually go to church on week-ends</b>	75	73.8
<b>Went to Assumption (those who went to Mass)</b>	92	86.9
<b>Churches other than Assumption attended:</b>		
	2 St. Bart	4 Corpus Christi
	4 Corpus Christi	2 St. James
	1 St. Clare	1 St. Barts
	1 St. Ann	1 St. John
	1 OLR	1 St. Ann
	1 St. James	1 Church of God
	1 St. Boniface	13 woods (campout)
	1 New Burlington	
	1 NCH Christian	
	1 College Hill Presb.	
	2 unnamed churches	

**SURVEY  
OF  
PARISH ORGANIZATIONS**

ASSUMPTION PARISH REPRESENTATIVES

Pastor	Rev. Francis Lammeier	521-7274
Sunday Help	Rev. Jeffrey Fulmer	863-4963
School Principal	Mr. William J. Walborn	522-0071
Dir. of Rel. Education	Sr. Marietta Sharkey	728-4941
PARISH COUNCIL	Meets 2nd Tues. 7:30PM	
	Bob Auchter ?	851-9856
	Tom Effler	521-0081
	Marty Hilgefert	931-4223
	<del>Wilma McGlasson</del>	522-7740
	Nancy Praechter ?	522-8857
	Laurent Blanchet ?	825-4772
	Bob Helms Cd!	521-2186
	Bill Hoenninger -	851-6478
	Jim Schultz ?	851-2659
1. EDUCATION COMMISSION	Meets 1st Wed. 7:30PM	
	Linda Goldschmidt	931-4592
	Tom Janszen	825-0120
	John Mueller	931-5531
	Tony Wagner	931-4360
	Diana Kay	931-2227
	Rick Wormus	729-0392
ASSUMPTION YOUTH MINISTRY	Betty Hancock	541-4661
ASSUMPTION ATHLETIC ASSOC.	Greg Cutter	522-3979
BEREAVEMENT MINISTRY	Nancy Reusch	931-5478
BINGO - Tuesday 7:15PM	Linda Hennel	742-0108
	Gary Bachman	522-8847
	Ron Yerger	851-7816
BOY SCOUTS	Jim Kolb	521-7332
CEMETERY TRUSTEE	Ted Hessler	931-7752
CHOIR - Wednesday 7:30PM in Church (no June, July, August)	Eugene Englert	681-5708
ENGAGED MINISTRY	Rick & Janet Reder	825-3824
FESTIVAL	Rick Reder	825-3824
2. FINANCE COMMITTEE - Meets 4th Tuesday		
	Richard Hahn	521-7274
	Tom Eschmeyer	851-2475
	Joe Bobinger	522-7808
	Chris Ciolino	729-3214
	Joe Roetting	729-1385
	Joe Workman	521-7922
GIRL SCOUTS	Diane Miller	742-1754
GUITAR GROUP	Jane Weber	522-1090
ST. MARY'S LADIES SODALITY - Meets 2nd Monday 7PM		
	Margaret Beckman	931-4634
LAY DISTRIBUTORS	Thea Padgett	522-7117
LEGION OF MARY	Mary Clare Heitker	761-6264
NETWORK OF CARE - Coordinator	Butch Homoelle	742-0421
	Handy Man	Loren Miller
	Health	Anne Ketzner
	Meals	Marianne Roy
	Travel	Barbara Bok
PRAYER GROUP	Ted Kramer	729-0838
P.T.O.	Peggy Huddle	521-6104
RESPECT LIFE	Donna Grauvogel	521-9886
SERVERS	Nancy Mohr	749-0926
SEWING GROUP	Mil Supe	521-4287
ST. VINCENT DE PAUL	Fran & Bob Mitchell	385-3721
USHERS	Vince Stehlin	385-8800

3. Vocations Awareness Ministry  
Welcome Committee

Rick Reder

1/1/8

Dear Assumption Organization Leader:

The Parish Council has appointed a Task Force to study and analyze the membership and purposes of each Parish Organization. It is anticipated that this data can be used in formulating a plan for marketing and promoting each organization individually and the Parish as a whole. Our Parish community is diverse in interest and in demographics, as are our organizations. In order to capture this on paper, we ask you to provide us with some data that might require some research on your part. Please answer each question as accurately as possible and return this survey to the Parish Council Task Force c/o the Assumption Parish Office. We really need to have this survey returned by March 8, 1999. Thank you for your cooperation.

**SURVEY OF PARISH ORGANIZATIONS**

Official Name of Organization: \_\_\_\_\_

Main Objective or Service: \_\_\_\_\_

Current total membership (number): \_\_\_\_\_

Membership 5 years ago (1993/1994 number): \_\_\_\_\_

Current number of **active** members  
(those who attend meetings on a fairly regular basis) \_\_\_\_\_

Estimated number of **active** members 5 years ago: \_\_\_\_\_

Estimated age span of members (youngest/oldest): \_\_\_\_\_

Estimated average age of **active** members: \_\_\_\_\_

Using the data already compiled and the trend it indicates, what do you anticipate your membership will be 5 years from now (2003/2004)?

Total membership: \_\_\_\_\_

Active membership: \_\_\_\_\_

Please list, in order of importance, the services or contributions your organization provide to the Parish Community:

- 1.
- 2.
- 3.

To the members of your organization:

- 1.
- 2.
- 3.

To the public community or environment:

- 1.
- 2.
- 3.

(Do not fill every category if it does not apply to your organization)



Does your group or organization have a recruiting or marketing plan in place to get more members?

YES \_\_\_\_\_  
NO \_\_\_\_\_

Do you contact newly registered parishioners?

YES \_\_\_\_\_  
NO \_\_\_\_\_

Is your organization accepting new members?

YES \_\_\_\_\_  
NO \_\_\_\_\_

Is there a waiting list to become a member of your organization?

YES \_\_\_\_\_  
NO \_\_\_\_\_

Does your organization have a program for welcoming and orienting/training new members?

YES \_\_\_\_\_  
NO \_\_\_\_\_

Does your organization experience problems in getting members to assume leadership roles?

YES \_\_\_\_\_  
NO \_\_\_\_\_

Some parish organizations have been forced to dissolve due to apathy or lack of interest or lack of leadership. Do you have any fears or concerns that your organization may be experiencing any of these difficulties?

YES \_\_\_\_\_  
NO \_\_\_\_\_

If yes, please explain as briefly as possible:

Would you welcome a workshop or some mentoring for your organization's leadership or membership to help resolve any problems you may have listed above?

YES \_\_\_\_\_  
NO \_\_\_\_\_

Would **you** be willing to attend a colloquium or gathering for the purposes of support and education as a group leader?

YES \_\_\_\_\_  
NO \_\_\_\_\_

If yes, what day or evening would be best for you?

Saturday morning \_\_\_\_\_

Saturday afternoon \_\_\_\_\_

Monday evening \_\_\_\_\_

Sunday afternoon \_\_\_\_\_

It is recognized that some organizations have membership by elected terms (e.g. Ed. Commission). If this describes your group, are goals clearly established and reached yearly?

YES \_\_\_\_\_  
NO \_\_\_\_\_

	1994	1998	2003
<b>Liturgical Ministries:</b>			
Lectors/Distributors	84	84	84
Bereavement	8	3	?
Choir	44	30	25
Guitar Ensemble	5	5	5
<b>Organizations:</b>			
Prayer Group	20	11	11
Youth Ministry	0	15	0-100
Vocation Awareness	0	7	10-15
Engaged Ministry	10	10	10
St. Vincent De Paul	19	19	?
Legion of Mary	7	6	6
Network of Care	0	62	25
Athletic Association	11	11	11
Girl Scouts	140	120	100
Boy Scouts	23/33	20	20
Ladies' Sodality	35	15	?
Sewing Group	14	14	?
PTO	NA	NA	NA
<b>Administrative:</b>			
Parish Council	9	9	9
Finance Committee	7	6	6
Welcome Committee	6	6	6
Education Commission	NA	NA	NA

## ACTIVE MEMBERS IN PARISH ORGANIZATIONS AND MINISTRIES

## DATA FROM ASSUMPTION PARISH ORGANIZATIONS

### **Services provided by organizations that are possibly unhealthy at this time:**

Aide pastor and bereaved in funeral liturgy planning and any additional way possible

Social opportunity for youth of parish

Helping the poor

Youth development

Help financially and in other ways with the needs of the Church

Honor the Blessed Virgin

Charitable contributions to other organizations

Sponsor Mother's Day Breakfast

Send money to shut-ins at Christmas time

Make 700 items for Parish Festival booth

Make Baptismal cloths for babies baptized

Miscellaneous sewing

**ORGANIZATIONS' SURVEY RESULTS, CONTINUED:**

**LEADERSHIP ISSUES:**

	<b>Recruiting plan?</b>	<b>Contact new parishioners?</b>	<b>Accepting new members?</b>	<b>Problem getting leaders?</b>
<b>Ministries:</b>				
Lectors/Distributors	no	yes	yes	no
Bereavement	no	no	yes	yes
Choir	yes	yes	yes	na
Guitar group	no	no	yes	no
<b>Organizations:</b>				
Parish Council	yes	no	elected	yes
Ed. Commission	na	na	elected	yes
Welcome Committee	no	yes (?)	yes	no
Finance Committee	no	no	yes	yes
Prayer Group	yes	no	yes	no
Youth Ministry	yes	no	yes	yes
Vocation Awareness	no	no	few only	not yet
Engaged Ministry	no	no	yes	no
Network of Care	no	no	yes	yes
Athletic Assoc.	no	no	yes	yes
Girl Scouts	yes	no	yes	yes
Boy Scouts	yes	no	yes	yes
Sodality	no	want to	yes	yes
Sewing Group	no	no	no	yes
Legion of Mary	yes	yes (?)	yes	no
St. Vincent De Paul	no	no	yes	no

**SURVEY  
OF  
AREA PARISHES**

Parish Survey Results												
Question #	OLR	St. Bart	St. James	St. I	St. Vivian	Assumption	St. MM	Little Flower	St Ann	St. John	St. Clare	
1. Families reg.	950	973	2917	2053	1010	1475	1100	1450	1448	1250	500	
2. Families Contributing	na	450	2165	70-75%	708	1215	625	800	900	450	400	
3. See other spreadsheet												
4. See other spreadsheet												
5. October Count 1993	na	2077	4201	2585	1450	1846	na	1890	1724	na	908	
6. October Count 1998	na	1702	4227	3470	1250	1442	na	1750	1925	na	628	
7. Sense of Apathy?	no	no	no	somewhat	no	no	no	for many	no	yes&no	no	
8. Concern about graying	no	no	w/ 2 org.	no	yes	yes	yes	yes!	no	no	yes	
9. Diff./leaders of orgs.	no	no	yes	yes	yes	yes	yes	yes	yes	yes	yes	
10. Diff./leaders of comm.	no	no	yes	yes	yes	yes	yes	no	yes	yes	yes	
11. Marketing plan?	yes	no	no	yes	no	no	yes	no	yes&no	no	no	
12. Working?	yes			no ans.			yes					
13. See other spreadsheet												
14. Successful youth min.?yes		no	yes	yes	yes	no	yes	yes	no	yes&no	no	

**Registered Families and Contributing Families  
In Area Parishes**

	<b>Registered</b>	<b>Regularly Contributing</b>
St. Bart	973	450
St. MM	1100	625
St. I	2053	1437
Assumption	1475	1215
St. James	2917	2165
St. Vivian	1010	708
Little Flower	1450	800
OLR	950	NA
St. John's Dry Ridge	1250	450

				SURVEY OF AREA PARISHES			
		NUMBER OF		OTHER		FEEL A SENSE OF	
		PRIESTS	FT /PT	ADMINISTRATORS		APATHY?	
						YES	NO
Our Lady of the Rosary		1 FT		5 FT / 2 PT			X
St. Bartholomew		1 FT / 1 PT		4 FT / 4 PT			X
St. James White Oak		2 FT		5 FT / 1 PT			X
St. Ignatius		1 FT / 2PT(retired)		3FT/4PT+ vol. Deacon		X	
St. Vivian		1 FT		3 FT / 1 PT			X
Assumption		1 FT/ 1 PT(very)		3 FT / 2 PT			X
St. Margaret Mary		1 FT / 1 PT		2 PT			X
Little Flower		1 FT / 1 PT(retired)		2 FT / 1 PT		X	
St. Ann		1FT / 1 PT		1 almost FT / 1 PT			X
St. John Dry Ridge		1 FT		2 FT / 1 PT		X	X
St. Clare		1 FT / 1 PT		2 FT / 2 PT			X



				SURVEY OF AREA PARISHES			
		NUMBER OF		OTHER		FEEL A SENSE OF	
		PRIESTS	FT /PT	ADMINISTRATORS		APATHY?	
						YES	NO
Our Lady of the Rosary		1 FT		5 FT / 2 PT			X
St. Bartholomew		1 FT / 1 PT		4 FT / 4 PT			X
St. James White Oak		2 FT		5 FT / 1 PT			X
St. Ignatius		1 FT / 2PT(retired)		3FT/4PT+ vol. Deacon		X	
St. Vivian		1 FT		3 FT / 1 PT			X
Assumption		1 FT/ 1 PT(very)		3 FT / 2 PT			X
St. Margaret Mary		1 FT / 1 PT		2 PT			X
Little Flower		1 FT / 1 PT(retired)		2 FT / 1 PT		X	
St. Ann		1FT / 1 PT		1 almost FT / 1 PT			X
St. John Dry Ridge		1 FT		2 FT / 1 PT		X	X
St. Clare		1 FT / 1 PT		2 FT / 2 PT			X

	DIFFICULTY GETTING LEADERS?		PARISH MARKETING		SENSE OF COMPETITION:	Parish		School	
	YES	NO	YES	NO	YES	NO	YES	NO	
	Our Lady of the Rosary		X	X			X	X	
St. Bartholomew		X		X		X		X	
St. James White Oak	X			X		X		X	
St. Ignatius	X		X			X		X	
St. Vivian	X			X		X		X	
Assumption	X			X		X	X		
St. Margaret Mary	X		X			X		X	
Little Flower		X		X		X		X	
St. Ann	X		X	X		X		X	
St. John, Dry Ridge	X			X		X		X	
St. Clare	X			X		X		X	

	DIFFICULTY GETTING LEADERS?		PARISH MARKETING		SENSE OF COMPETITION:	Parish		School	
	YES	NO	YES	NO	YES	NO	YES	NO	
Our Lady of the Rosary		X	X			X	X		
St. Bartholomew		X		X		X		X	
St. James White Oak	X			X		X		X	
St. Ignatius	X		X			X		X	
St. Vivian	X			X		X		X	
Assumption	X			X		X	X		
St. Margaret Mary	X		X			X		X	
Little Flower		X		X		X		X	
St. Ann	X		X	X		X		X	
St. John, Dry Ridge	X			X		X		X	
St. Clare	X			X		X		X	

	CONCERNED ABOUT "GRAYING" OF ORGANIZATIONS?		HAVE SUCCESSFUL YOUTH PROGRAM?	
	YES	NO	YES	NO
Our Lady of the Rosary		X	X	
St. Bartholomew		X		X, BUT WORKING ON IT
St. James, White Oak		X	X	
St. Ignatius		X	X	
St. Vivian	X		X	
Assumption	X			X
St. Margaret Mary	X		X	
Little Flower	X!		X	

**SURVEY  
OF  
AREA PARISH  
SCHOOLS**

**ENROLLMENT FIGURES VS. SENSE OF COMPETITION**

	1993-1994	1998-1999	FEEL SENSE OF COMPETITION?	
			YES	NO
OLR	261	250	X	
St. Bart	779	734		X
St. James W.O.	NA	1139		X
St. I	679	752		X
St. V	368	403		X
Assumption	448	373	X	
St. MM	NA	350	UNKNOWN	
Little Flower	517	520		X
St Ann	393	371	UNKNOWN	
St. John's Dry Ridge				X

	ENROLLMENT		% CHANGE	WAITING LIST?
	1993-1994	1998-1999		
<b>Our Lady of the Rosary</b>	261	250	-4%	YES
<b>St. Bartholomew</b>	779	734	-6%	YES
<b>St. James, White Oak</b>		1139	NA	NO
<b>St. Ignatius</b>	679	752	11%	NO
<b>St. Vivian</b>	368	403	10%	YES
<b>Assumption</b>	448	373	-17%	NO
<b>St. Margaret Mary</b>		350	NA	YES
<b>Little Flower</b>	517	502	-3%	YES
<b>St. Ann</b>	393	371	-6%	NO

	<b>SPECIAL EDUCATION PROGRAM?</b>	<b>TESTING FOR LEARNING DISABILITIES?</b>	<b>PERSON RESPONSIBLE FOR EVALUATING ADMINISTRATORS?</b>
<b>Our Lady of the Rosary</b>	YES	YES	PASTOR
<b>St. Bartholomew</b>	NO	YES	SCHOOL BOARD
<b>St. James, White Oak</b>	YES	YES	PASTOR
<b>St. Ignatius</b>	YES	YES	PASTOR
<b>St. Vivian</b>	YES	YES	PASTOR
<b>Assumption</b>	NO	YES	PASTOR
<b>St. Margaret Mary</b>	NO	NO	PASTOR
<b>Little Flower</b>	YES	YES	PASTOR
<b>St. Ann</b>	NO	YES	PASTOR